

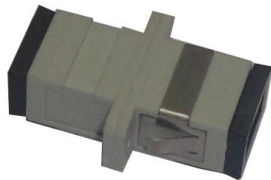
Fiber Optic Couplers



3580001



3580002



3580012



3580013

Applications:

- Data Transmission
- Measurement equipment
- Premise installation
- Local Area Networks

ST-ST COUPLER:

Specifications:

- Insertion Loss: Single/Multi Mode < 0.3dB

Features:

- Compatible with all ST standards
- Fiber Type: Simplex and Duplex (see part numbers)
- High Precision mechanical dimension
- Fiber Application: Multimode and Single mode
- Zirconia or Phosphor Bronze sleeve
- Zinc alloy Die Cast housing

Durability:

- Single/Multi Mode <0.2dB after 1,000 matings

Operation Temperature:

- Single/Multi Mode: -40° C ~ +80° C

ST-SC COUPLER:

Features:

- Compatible with all ST-SC standards
- High Precision mechanical dimension
- Fiber Application: Multimode
- Fiber Type: Duplex and simplex (see part numbers)
- Easy to assemble one-piece
- Meets the EIA/TIA 568A
- Designed to maintain fiber optic polarity in the telecommunication and data communication networks.
- Provides smooth insertion and removal of the connectors' pairs.

Operation Temperature:

- Single/Multi Mode: -40° C ~ +80° C

SC-SC COUPLER:

Features:

- Compatible with all SC standards
- High Precision mechanical dimension
- Fiber Application: Multimode and Single mode
- Fiber Type: Duplex or simplex (see part numbers)
- Zirconia or Phosphor Bronze sleeve
- Zinc alloy Die Cast housing
- Easy assemble one-piece
- Designed to maintain fiber optic cabling polarity in the telecommunication and data communication networks.
- Provides smooth insertion and removal of the connector pairs.

Operation Temperature:

- Single/Multi Mode: -40° C ~ +80° C

Ordering Information:

Part Number	Description
NEW-3580001	ST-ST coupler simplex
NEW-3580002	SC-SC coupler simplex
NEW-3580012	SC-SC coupler duplex
NEW-3580013	ST-SC coupler duplex